

The Touchdown Suite: *A new model for the delivery of library services*

Will Bryant, Associate Director, Finance and Administration, Welch Library, Johns Hopkins University

“Network Concept”



What is a “Touchdown” NOT?

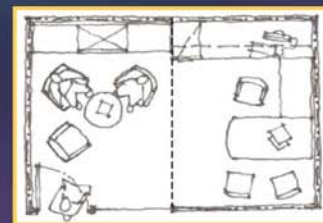
- ❖ A satellite library – no full-time staffing
- ❖ A print collection – no print books/journals
- ❖ A dedicated library space –no, it’s multi-purpose
- ❖ A specific configuration of services and resources - no, there are multiple models

What is a “Touchdown Suite”?

A delivery model in a geographic environment offering a range of library services and resources supporting teaching, research, and patient care activities.

Touchdown Suite Core Services

- ❖ Collaborative information services from a liaison librarian
- ❖ Content-specific electronic resources
- ❖ Customized training classes
- ❖ Tailored technology systems and toolkits
- ❖ Program support provided by a content partner
- ❖ Suite configuration and set-up

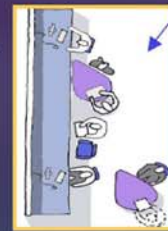


Shared Office / Consultation Space

What does a Touchdown Suite look like?



Quiet Reading / Meeting Area



Demonstration Area

Multiple Models

- ❖ A current satellite or departmental library transformed to a touchdown
- ❖ New space assigned to a department, but not yet actively in use
- ❖ Shared space with multiple uses including the touchdown suite

Additional Information on the Welch Library’s plan for touchdown suites and the Library of 2015 can be found at the following urls:

<http://www.welch.jhu.edu/architecturalstudy/index.html> and <http://www.welch.jhu.edu/classes/wls.html>